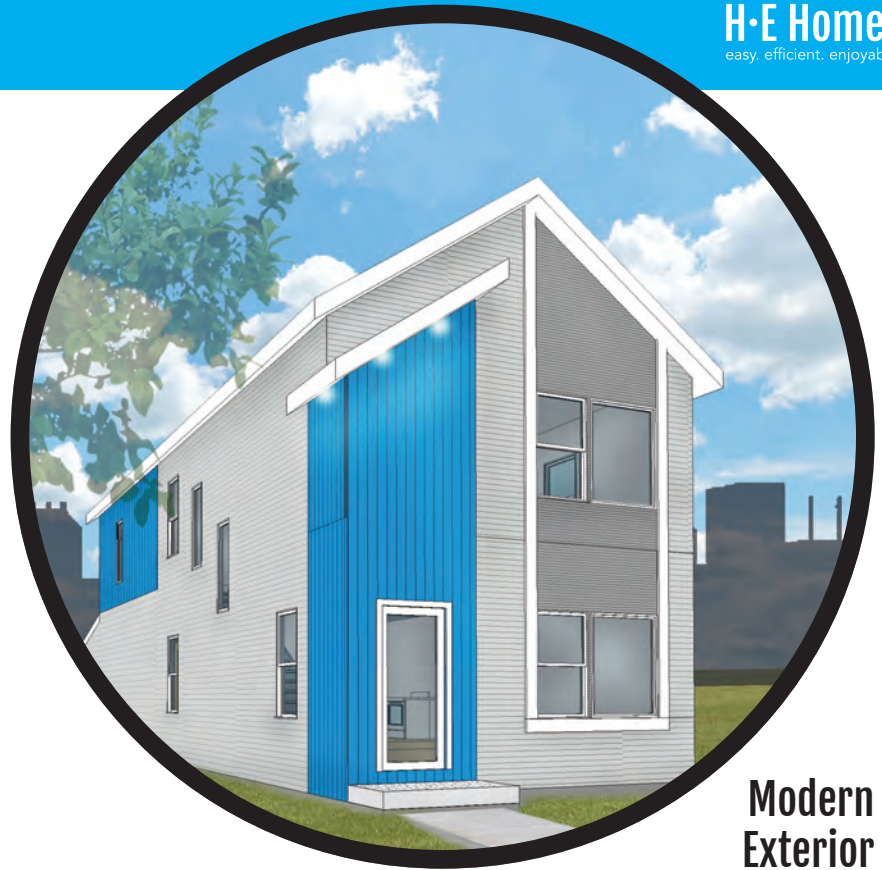


THE ANIMATE DESIGN

Arranged around the idea of connecting people, the “Animate” design was inspired by the different possibilities for how your family lives.

The completely open main level provides a stunning look from the front door, connecting all of the spaces into a clean and streamlined aesthetic. Upstairs, the space can easily be used for you or to entertain, depending on how the flex space is arranged. Add the available rooftop deck and wet bar, and this upper level connects to the downstairs for perfect parties.

No matter the family, the Animate design is a consistent favorite and leaves many possibilities for an wonderful place to call home!



Modern Exterior

-  **2,383 Total Square Feet**
Incl. 693 SF basement
-  **3-4 Bedrooms**
-  **2.5-3.5 Bathrooms**

+ **Plus:**

- Open-concept main level kitchen space
- Oversized kitchen bar with eat-in island
- Panoramic front living room windows
- Upper level flex-space for bonus square footage
- Split guest bath/sinks so that two people can use the bathroom at the same time



Contemporary Exterior



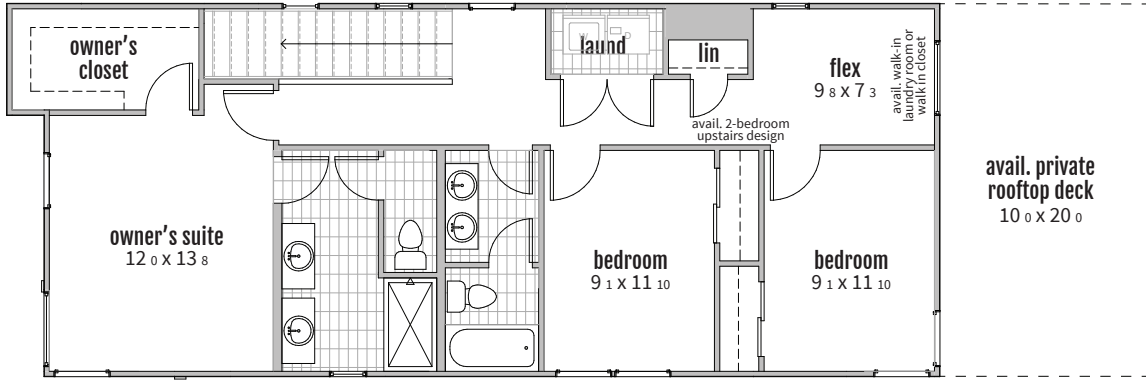
Transitional Exterior

THE ANIMATE DESIGN

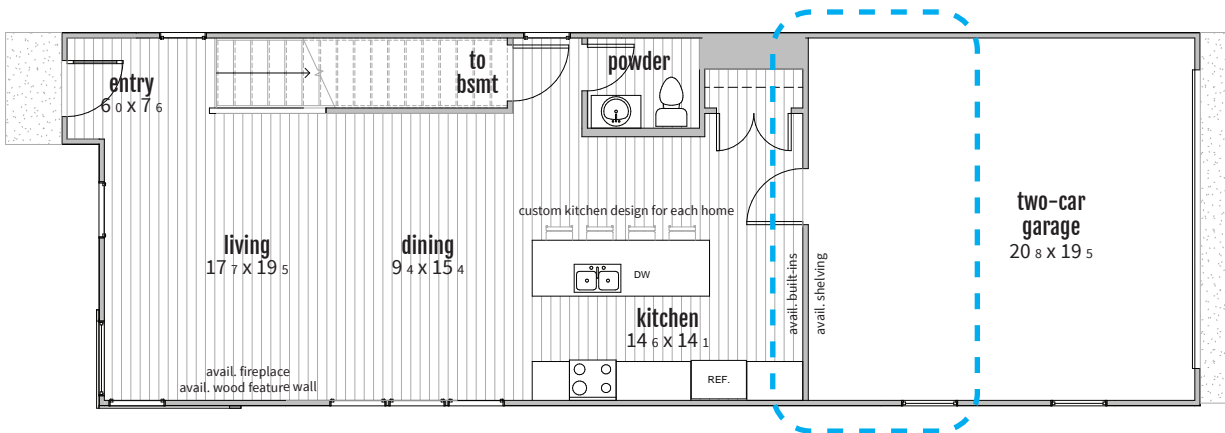
DESIGN LAYOUTS

customizations available upon request

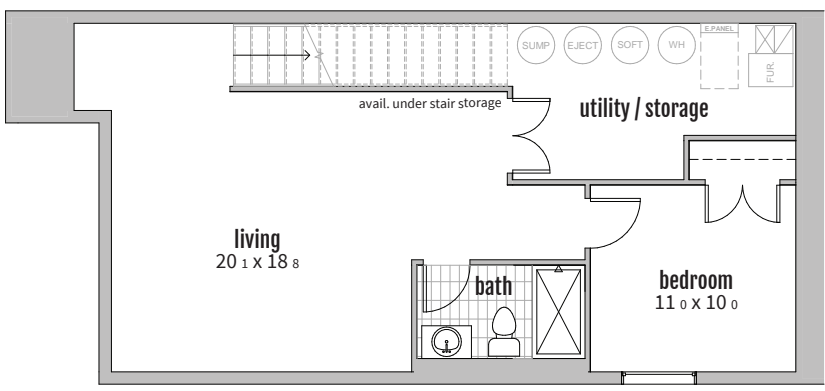
2



1



B



unfinished basement included. basement finish layout shown. several finish options available depending on owner preferences.

rear porch
if detached garage:

