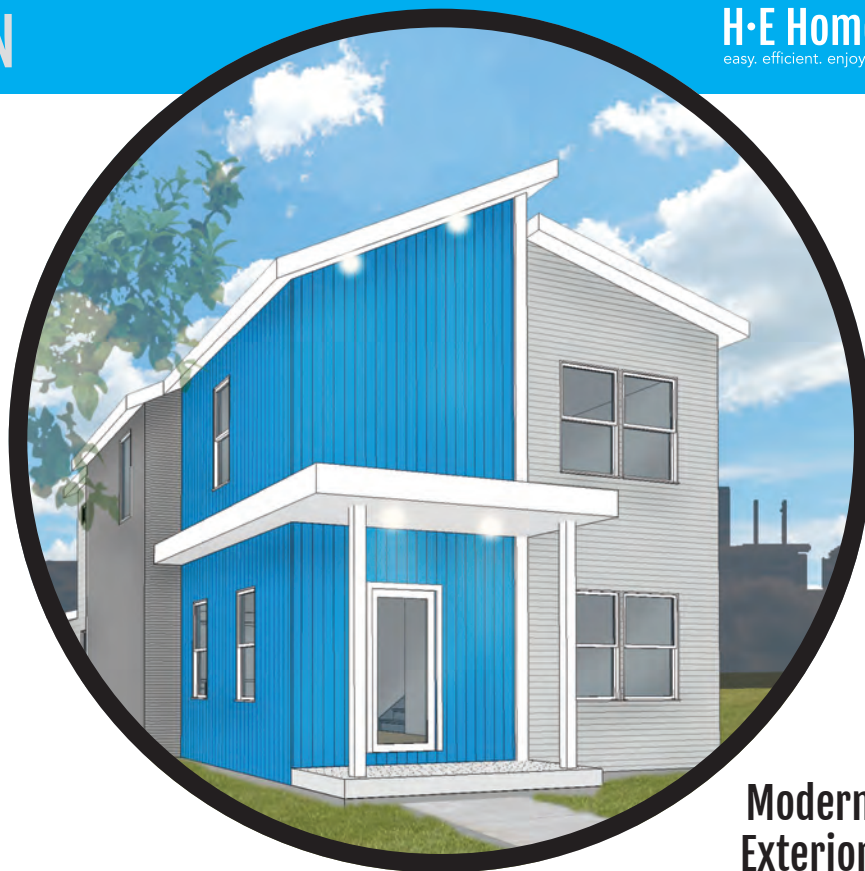


# THE DISCOVER DESIGN

As an open and free-flowing layout, the “Discover” design has become a quick favorite due to its main level bedroom/office space. This gives a dedicated space for work-at-home families or visiting guests. Layout options for this home can provide awesome entertainment space inside and out.

Available basement options leave plenty of flexibility for family lifestyles. Whether you would like a showstopping media center, additional storage space, or the rare-to-find “6th bedroom” in a spacious downtown home.

Upstairs, the spacious owner’s suite features panoramic windows or an available private rooftop deck to welcome you home each day!



**Modern Exterior**



**3,144 Total Square Feet**

Incl. 964 SF basement



**4-6 Bedrooms**



**2.5-4 Bathrooms**



**Plus:**

- Central kitchen design for flexibility
- Oversized walk-in pantry space
- Dedicated mudroom and storage

- Clean, open basement level perfect for entertaining
- Perfect for larger families or friends
- Covered front porch to connect to the neighborhood



**Contemporary Exterior**



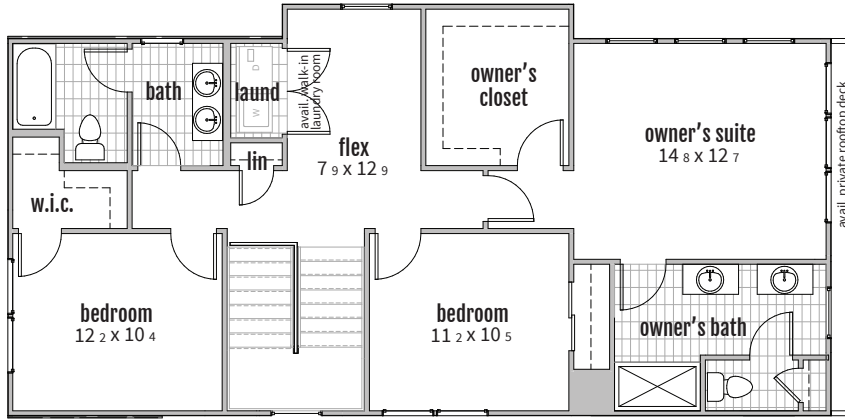
**Transitional Exterior**

# THE DISCOVER DESIGN

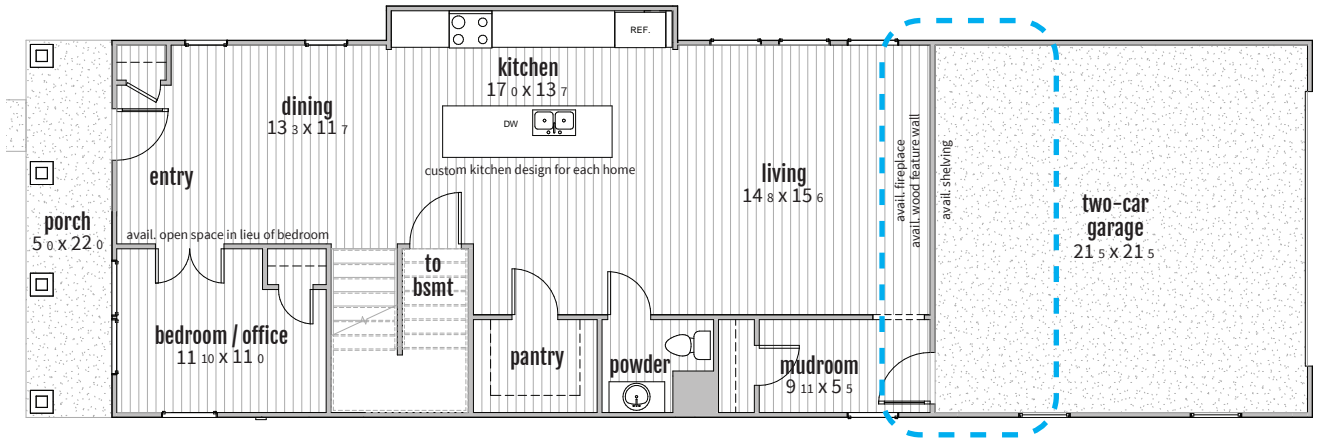
## DESIGN LAYOUTS

customizations available upon request

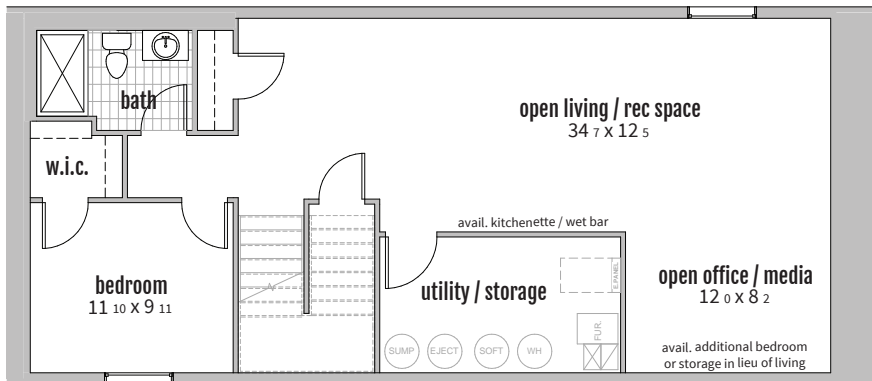
2



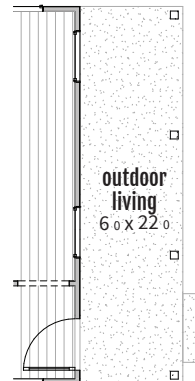
1



B



rear porch  
if detached garage:



unfinished basement included. basement finish layout shown. several finish options available depending on owner preferences.