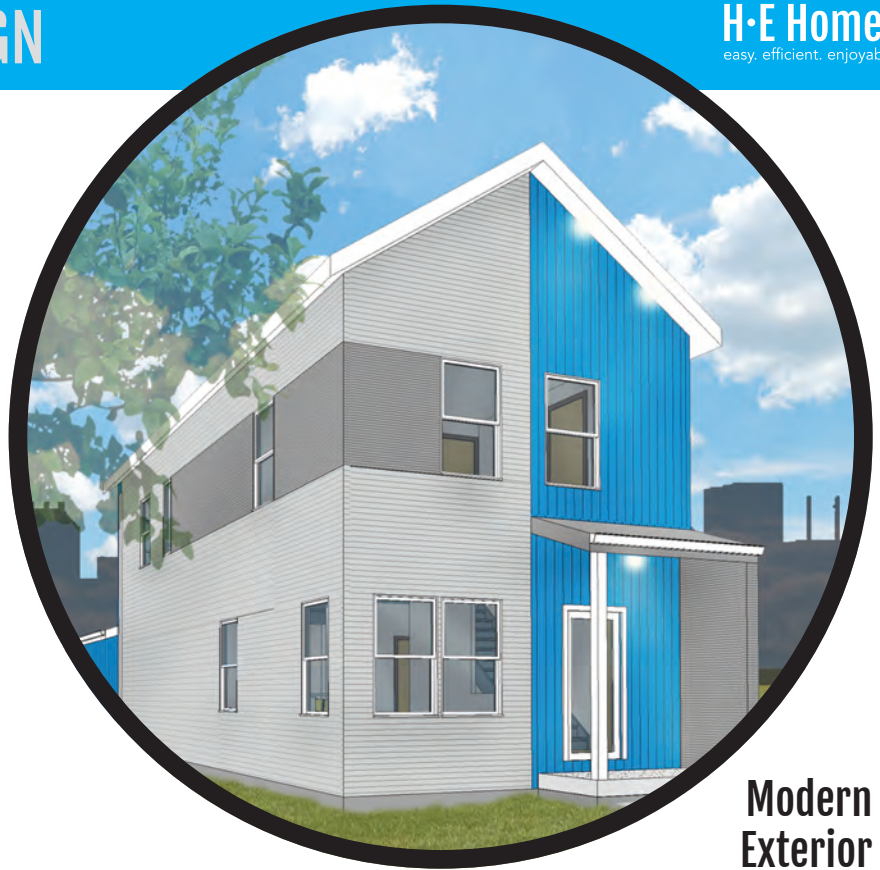


THE CURIOSITY DESIGN

Proving that a downtown home can feel open and bright, our “Curiosity” design showcases bright corner windows, various exterior designs, and an incredible design layout.

The main level is the refined result of listening to our client’s goals for a flowing layout, open centerpiece staircase, and connection to the upper level and basement spaces. The basement suite can be a perfect multi-use living space. Upstairs, the open owner’s suite goes from wall-to-wall on the entire rear of the home, with a bathroom design perfect for families waking up at different times.

Overall, the centerpiece living room with available feature walls and open concept living style creates a flexible and inviting home.



Modern Exterior



2,246 Total Square Feet

Incl. 712 SF basement



2-3 Bedrooms



2.5-3.5 Bathrooms



Plus:

- Flexible, customizable kitchen design
- Open living space with panoramic windows
- Centerpiece artful staircase that brings together the levels of the home
- Owner’s suite designed with privacy in mind
- Dual walk-in closets on upper level provide extra space
- Flexible basement space designed with entertaining and long-term guests in mind



Contemporary Exterior



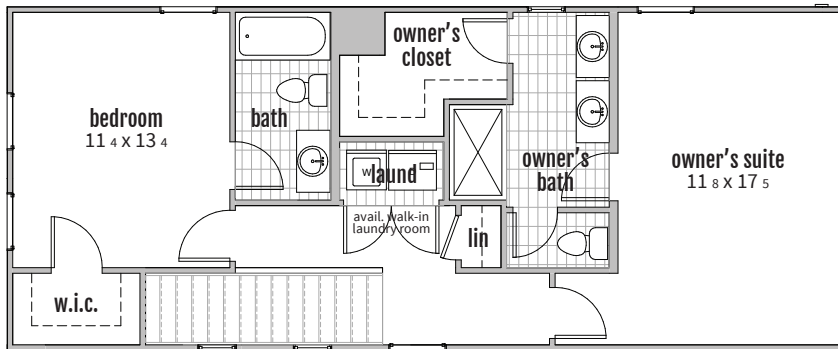
Transitional Exterior

THE CURIOSITY DESIGN

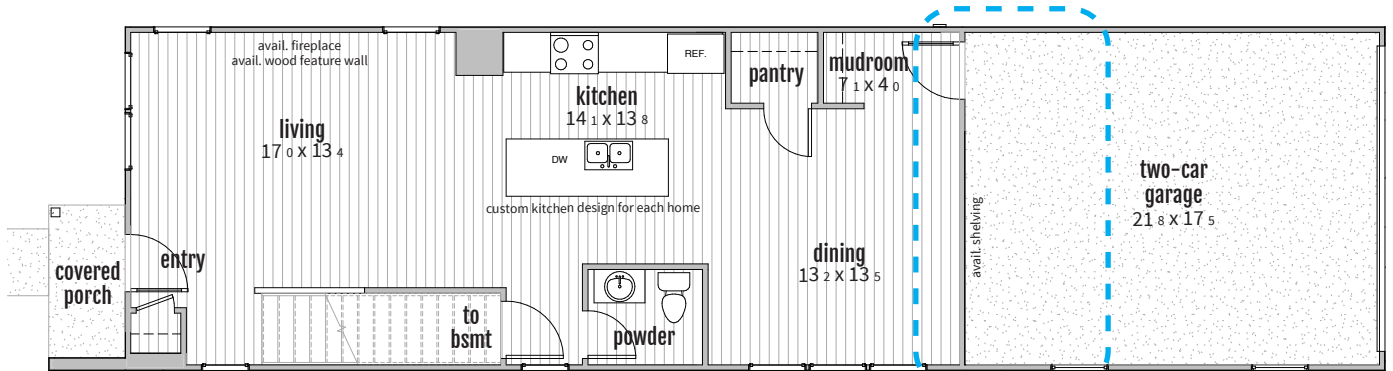
DESIGN LAYOUTS

customizations available upon request

2

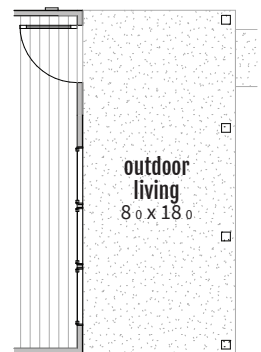
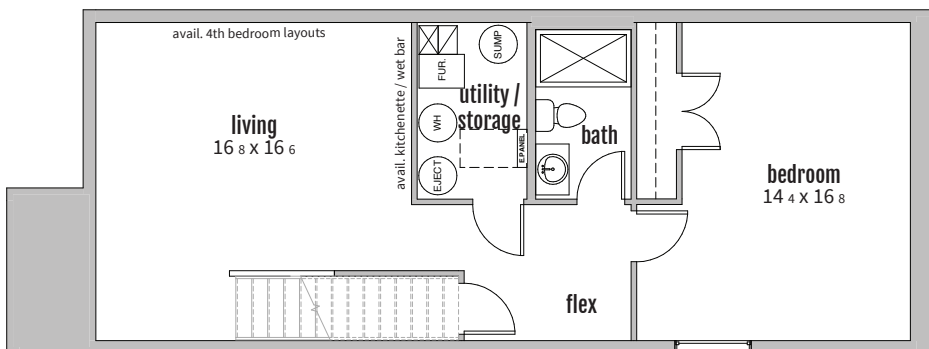


1



included rear porch
if detached garage:

B



unfinished basement included. basement finish layout shown. several finish options available depending on owner preferences.