

# THE PERFORM DESIGN

The “Perform” design was developed in collaboration with the Ball State University College of Architecture and Planning through a design competition to create the best energy-efficient and flexible urban home design. Showcasing an open living space split from the kitchen space, this design focuses on family and day-to-day living. It offers privacy throughout the home, however still delivers an open-concept experience that families love. The upper level is based on flexibility, offering the owner’s suite to be separated from the surrounding bedrooms, yet close enough to the family.

Some available extras include private rooftop decks, an open basement perfect for large events, and a detached garage to showcase an outstanding urban design!



**Modern Exterior**



**2,832 Total Square Feet**

Incl. 904 SF basement



**3-4 Bedrooms**



**2.5-3.5 Bathrooms**



**Plus:**

- Detached garage design
- Chef’s style kitchen and layout
- Connected outdoor living space designed for entertaining
- Centerpiece staircase with 2-story soaring ceilings
- Hotel-style master suite with opt. private roof deck
- Dual front bedrooms with large closets



**Contemporary Exterior**



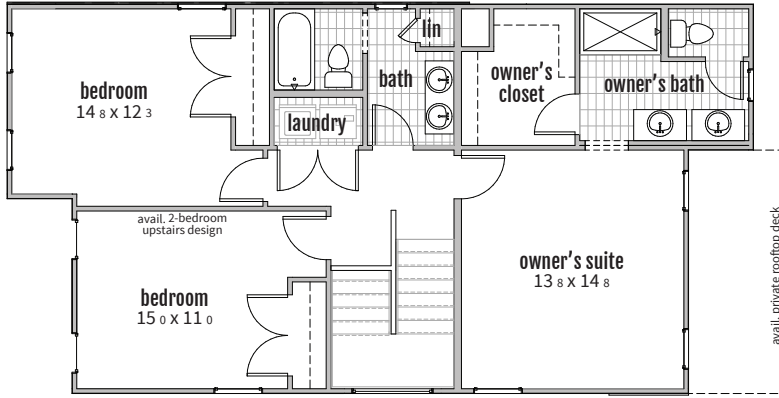
**Transitional Exterior**

# THE PERFORM DESIGN

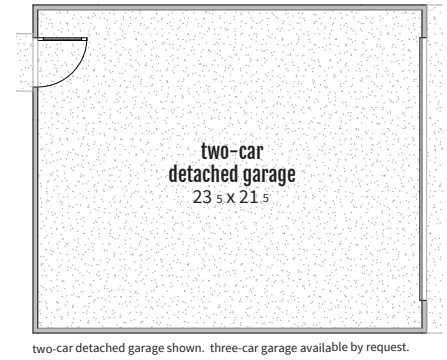
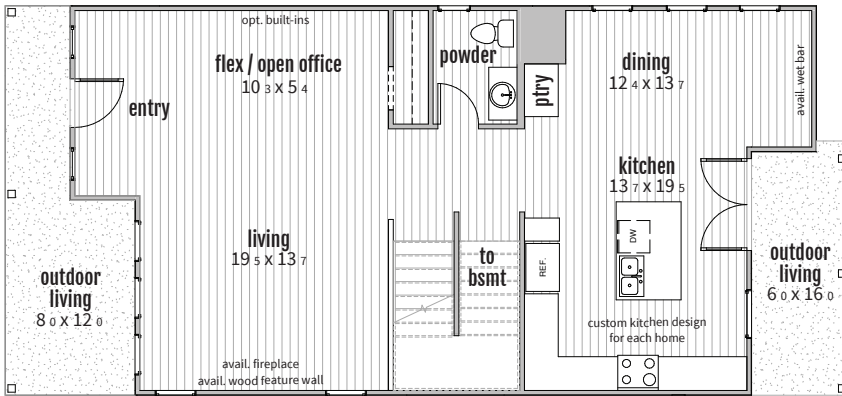
## DESIGN LAYOUTS

customizations available upon request

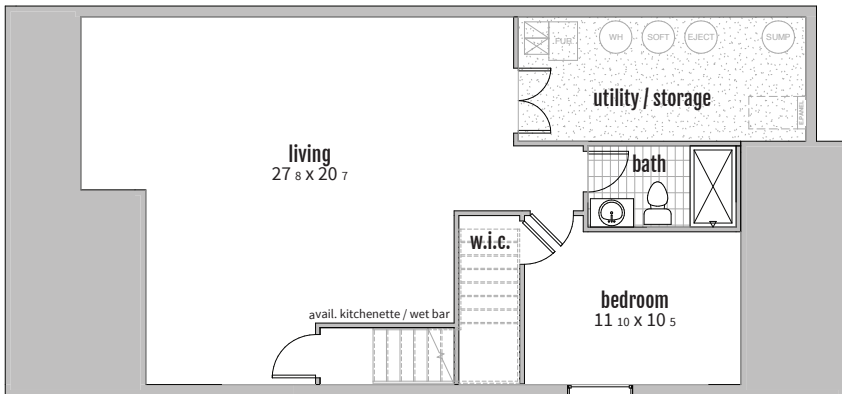
2



1



B



unfinished basement included. basement finish layout shown. several finish options available depending on owner preferences.