

# THE THRIVE DESIGN

As one of our most popular design options, the “Thrive” design layout focuses on flexible, open space perfect for living and entertaining downtown.

The open-concept living spaces connect from room-to-room, and flow in a unique way such that the main level does not feel like one “big open room.” Upstairs, the design is perfect for families, big or small. The upper level flex area provides a breakaway space for an open office, play room, or simple flex space.

Additional storage space in the basement and attached garage provide that “hard-to-find” extra space that is usually forgotten downtown! In some cases, the garage workshop space can serve as a tandem 3-car garage. This flexible design provides a clean aesthetic inside and out for a home you will love for years to come!



**Modern Exterior**

 **3,126 Total Square Feet**  
Incl. 1,085 SF basement

 **3-4 Bedrooms**

 **2.5-3.5 Bathrooms**

 **Plus:**

- Attached / detached garage options
- Covered outdoor living space
- Oversized eat-in kitchen island
- Flexible living connected room-to-room
- Media space in basement with available packages
- Optional rooftop party deck over attached garage



**Contemporary Exterior**



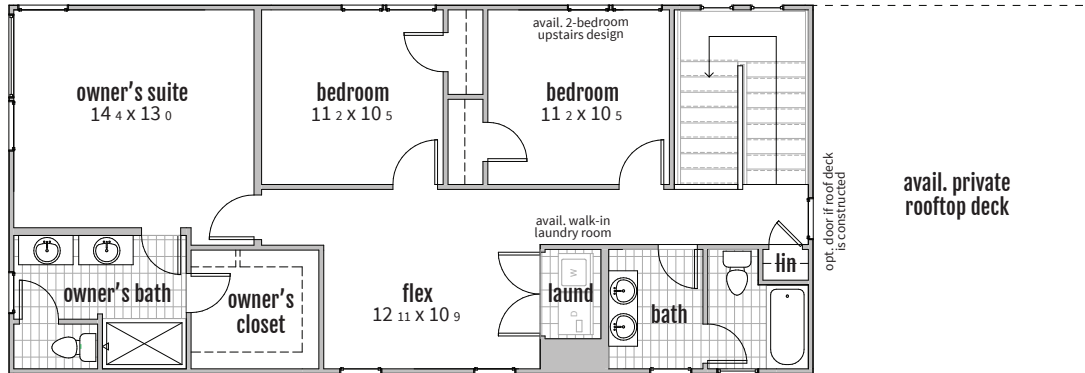
**Transitional Exterior**

# THE THRIVE DESIGN

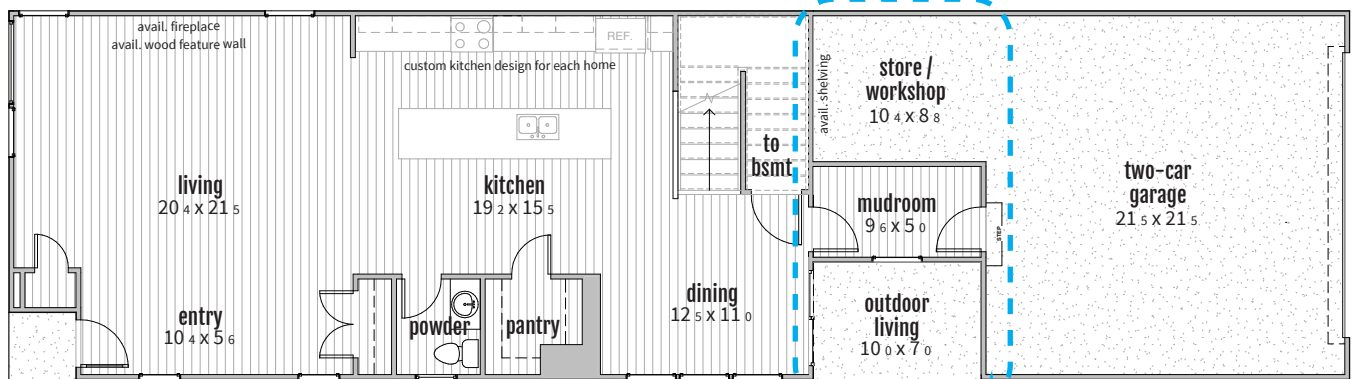
## DESIGN LAYOUTS

customizations available upon request

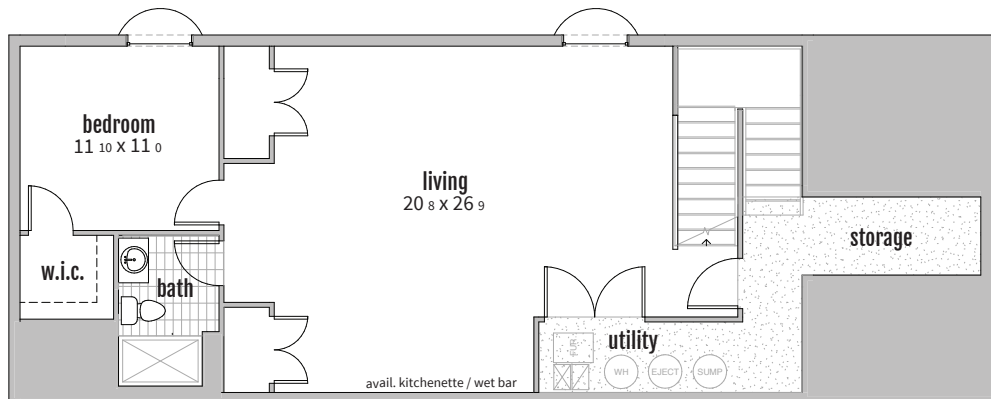
2



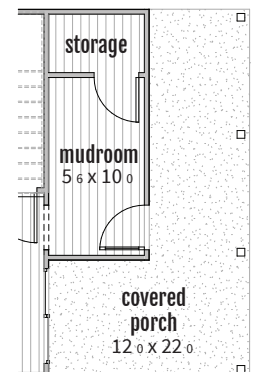
1



B



included mudroom and porch if detached garage:



unfinished basement included. basement finish layout shown. several finish options available depending on owner preferences.