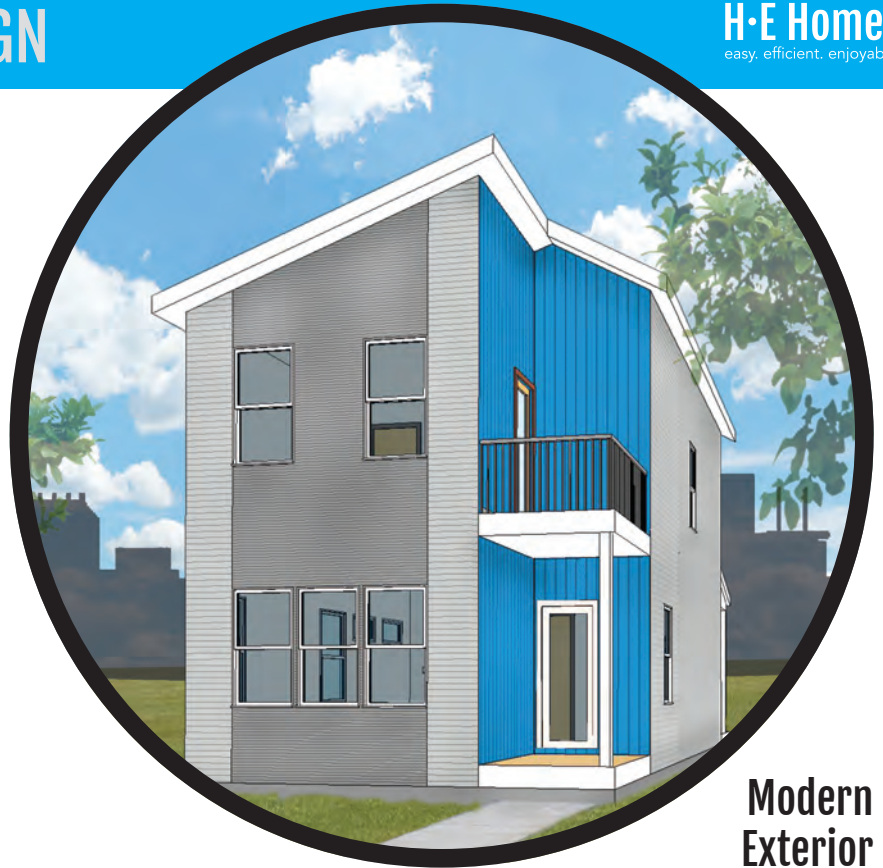


THE ESTABLISH DESIGN

Our Establish design pushes the boundaries of delivering an outstanding value for a brand new downtown home. The design is packed with all of the same high-end finishes and thoughtful design features expected from each of our outstanding customizable designs.

Enjoy an open-concept main living area with an inviting entry, fully-covered porch, and plenty of extra space for entertaining! The large island is set up to be a perfect place for cooking and spending time together with the family, and is designed with the rest of the kitchen to have everything needed in a smart fashion - from the built-in full pantry, large kitchen windows, and great work area right across from the island.

Upstairs, the owner's suite enjoys the privacy of the front portion of the house with large closets, fully-tiled showers, and extra features!



Modern Exterior



2,124 Total Square Feet

Incl. 618 SF basement and outdoor living



2-4 Bedrooms



2.5-3.5 Bathrooms



Plus:

- Attached or detached garage
- Large kitchen eat-in island
- Dedicated mudroom with available custom built-ins

- Private owner's suite with available private roof deck
- Large windows, abundant natural lighting
- Available full back covered porch for abundant outdoor living space



Contemporary Exterior



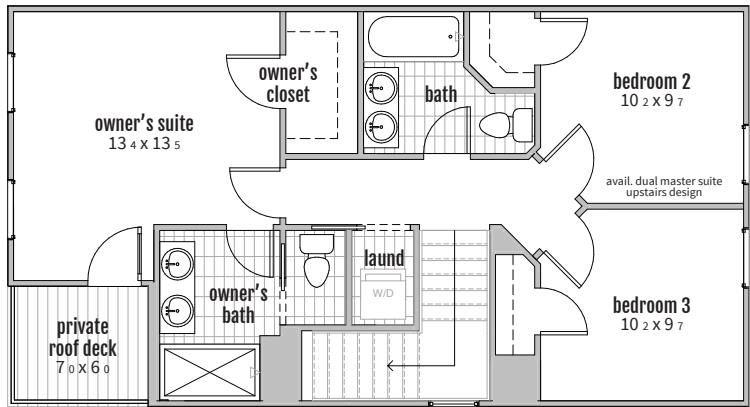
Transitional Exterior

THE ESTABLISH DESIGN

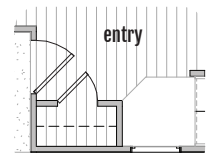
DESIGN LAYOUTS

customizations available upon request

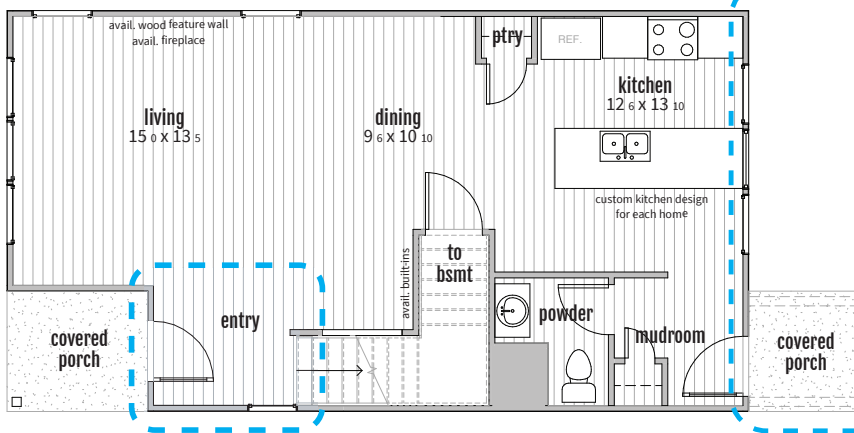
2



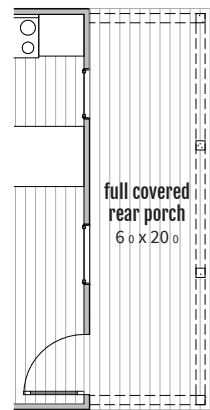
coat closet at entry



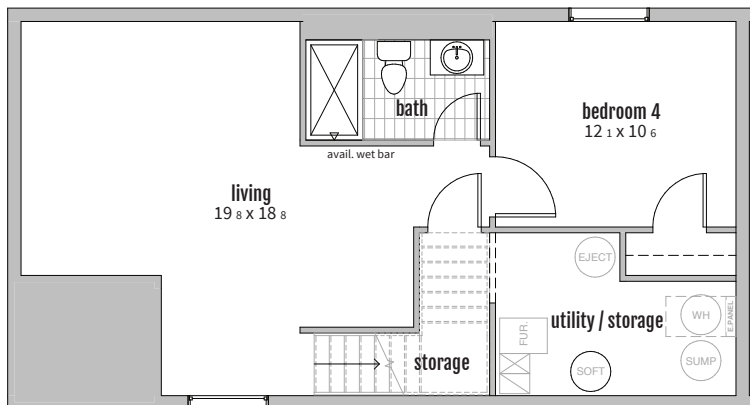
1



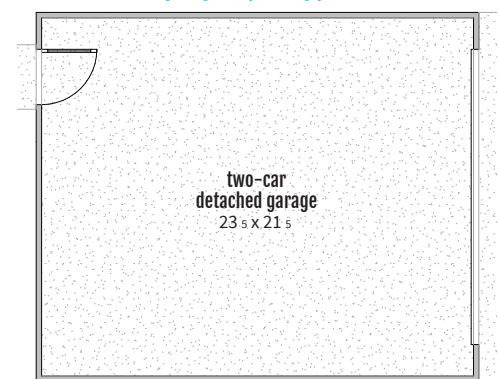
avail. full rear porch



B



2 car detached garage or parking pad



unfinished basement included. basement finish layout shown. several finish options available depending on owner preferences.

two-car garage shown. three-car garage available by request.